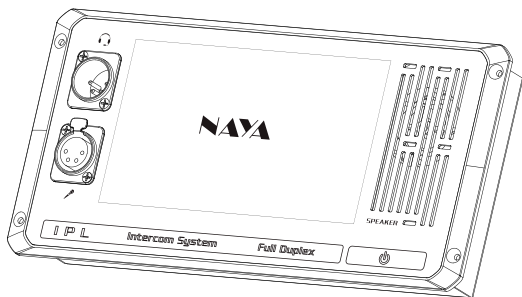




User Manual of Intercom Dispatcher **IPL-DT4320**



Content

1 Check the items in the package	3
2 Parts introduction	3
2.1 Front panel	3
2.2 Back panel	4
3 Preparation before using	5
3.1 Power on/off	5
3.2 Networking	5
3.3 Voice call	5
3.4 Call mode switching	5
3.5 Voice adjustment	6
4 Status description	6
4.1 Intercom status	6
4.2 Grouping status	6
4.3 Isolation status	6
5 Shortcut menu description	6
5.1 Quick control	6
5.2 Slave ID.No	7
5.3 MIC return	8
5.4 Default setting	8
6 Installation method	9
6.1 Flush mounting	9
6.2 Bracket mounting	9
7 Maintenance and Cleaning	9
7.1 Maintenance	9
7.2 Cleaning	9
8 Warranty and Maintenance Terms	10
8.1 Warranty scope and period	10
8.2 Maintenance terms	10
9 Warranty card	11

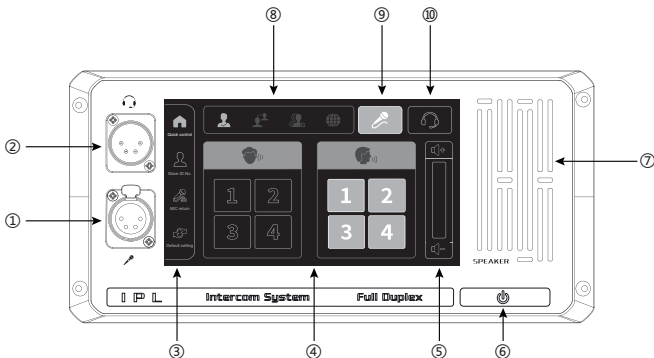
1 Check the items in the package







The package contains the following items, if any damage or loss, please contact Naya or the dealer you purchased from.

No.	Item	Q'ty
①	Dispatch host	1 PCS
②	MIC	1 PCS
③	Adapter	1 PCS
④	Manual	1 PCS
⑤	Screws	1 SET
⑥	Installation diagram	1 PCS

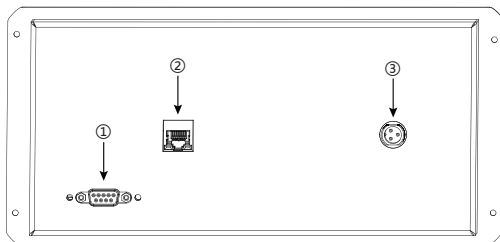
2 Parts introduction

2.1 Front panel



No.	Item	Description
①	MIC socket	4-pin XLR female, for gooseneck mic
②	Headset socket	4-pin XLR male, for headphone
③	Shortcut menu	Quick control, slave ID.No., MIC return, default setting
④	Menu display	Main interface, shortcut menu content/control display
⑤	VOLUME	Volume control, drag up/down or touch +/- for adjustment
⑥	Power on/off	Short press the button to turn the device on, and then long press it for 3 seconds to turn it off.
⑦	SPEAKER	Voice played out when using MIC.
⑧		Enter intercom status when the icon highlight
		Enter isolation status when the icon highlight
		Enter grouping status when the icon highlight
		Enter networking status when the icon highlight
⑨		Touch key, work when the icon highlight, to turn on/off MIC&SPEAKER
⑩		Touch key, work when the icon highlight, to turn on/off headphone

2.2 Back panel



No.	Item	Description
①	Configuration port	RS232, for configuration
②	Network port	RJ45, 10M/100M Ethernet
③	Power port	GX12 3-pin aviation socket, DC12V/2A

3 Preparation before using

3.1 Power on/off

Operating voltage of the device is DC 12V/2A, with special adapter that connected to city electricity AC 110/220V. Good grounding is necessary, or this may cause permanent damage to the device.

Power on: short press  . Power off: long press  for 3 seconds.

3.2 Networking


Device work only when connected to other IPL device via network. After installation the device must be connected to voice network via Ethernet cable.

3.3 Voice call


When the device is powered on and connected to voice network, it can call to other IPL devices. MIC and SPEAKER is on as default. At this time full-duplex call can be made between this device and other ones.

3.4 Call mode switching

Call with MIC:

- ◆ Insert MIC to the socket, with notch on MIC aligned with corresponding position of the interface.
- ◆ Press PUSH lock to unplug MIC.
- ◆ MIC  highlight as default, and SPEAKER is on at same time.

Call with headphone:

- ◆ Call can be made with headphone as well. Insert headphone to the socket, and then touch the icon  to turn it on.
- ◆ After that full-duplex call can be made with headphone .
- ◆ If both MIC and HEADPHONE icons are off, then the device enters silent state, and can receive audio but can't send out audio.

Remarks: Its impossible to switch call mode in interface of slave ID.No. Setting, MIC return setting, factory reset. Switch is made only in quick control interface.

NAYA



Please read the manual carefully before using the product

Website: <http://www.nayatec.com>

Manufacturer: Shanghai Naya Intelligence Technology. Co.,Ltd.

Address: No.7001 Zhongchun RD., Minhang district, Shanghai, 201101, China

3.5 Volume adjustment


In quick control main interface, voice adjustment can be made when drag up/down the volume bar or touch volume icon +/-.

Remarks: Its impossible to adjust volume in interface of slave ID.No. Setting, MIC return setting, factory reset. Adjustment is made only in quick control interface.

4 Status description


4.1 Intercom status

◆ The device enters to intercom status automatically after its powered on.

◆ In this status, the icon  highlight. And slave ID.No. shown in quick control interface. And the device can call to other IPL devices.


4.2 Grouping status

◆ Grouping status can't be selected with this device, and the device just can enter grouping status if getting instructions from other hosts.

◆ In this status, the icon  highlight. And grouping state shown in quick control interface. At this time you can select one or some groups to listen, or speak to any one group for call.

4.3 Isolation status

◆ Isolation status can't be selected with this device, but the device can enter isolation status if getting instructions from other hosts.

◆ In this status, the icon  highlight. All IPL devices(and wireless beltacks) just call to host or console in network. This device as IPL slave, can't speak to each other.

5 Shortcut menu description

5.1 Quick control

◆ Intercom interface

In intercom status, click the icon quick control , slave ID.No. shown in the main interface as below.



Diagram 1


◆ Grouping interface

In grouping status, press the icon quick control to switch to dispatch interface as below.



Diagram 2

5.2 Slave ID.No

Click icon  to slave ID.No. setting interface as below. Then select left/right for modification, exit to keep the configuration and return to main interface.

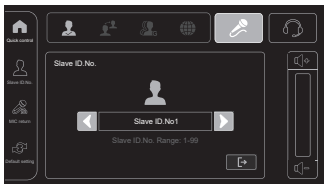



Diagram 3

5.3 MIC return

◆ Click MIC return icon , to enter the interface as below. Then select left/right to set MIC return 0-100%. Exit to keep the modification and return to main interface.

◆ After MIC return is on, audio from this device can be heard. The higher of the level, the louder of MIC return volume.

◆ MIC return is off as default.

Remarks: If this function is on, then echo suppression is off, which might affect sound quality.

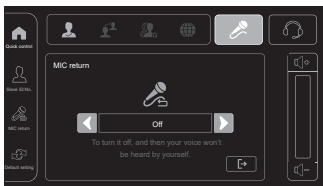



Diagram 4

5.4 Default setting

◆ Click default setting icon , to enter the interface as below. Then select left/right for configuration. Exit to keep the modification and return to main interface.

Recommended setting including “to keep current state”, “factory reset”, “common setting in silent scenes”, “common setting in noisy scenes”.

◆ To keep current setting: no modification

◆ Factory reset: parameters will be changed to default

◆ Common setting in silent scenes: quick configuration for silent place.

◆ Common setting for noisy scene: quick configuration for noisy place.

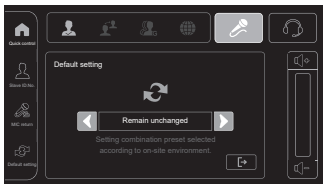


Diagram 5

6 Installation method

6.1 Flush mounting

Product size and cut-out size refer to the drawings inside the package(1:1), to fix it with screws after cutout.

6.2 Bracket mounting

Brackets are optional, as below, could adjust the angle after installation.

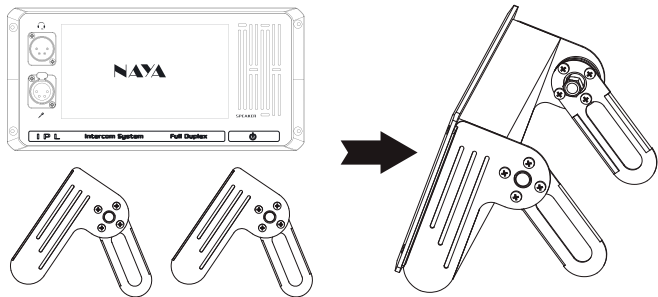


Diagram 6

7 Maintenance and Cleaning

In order to ensure that this equipment can exert its good performance and extend its service life, please be familiar with the following for better daily maintenance and cleaning.

7.1 Maintenance

- ◆ Do not puncture or scratch the device with hard objects;
- ◆ Do not store the device in an environment containing corrosive electronic circuits;

7.2 Cleaning

- ◆ Clean the device regularly and use a clean, dry towel or brush to remove dust from the surface of the device.

◆ If the equipment casing becomes dirty, you can use neutral detergent and no obstruction cloth to clean it, do not use stain remover, alcohol, spray and other chemical preparations to avoid damage to the equipment, be sure to ensure that the equipment is completely dry, otherwise do not use.

8 Warranty and Maintenance Terms

The company promises that all the equipment produced by the company, from the date of purchase, under normal use operation and maintenance conditions, material or manufacturing process defects, can enjoy the following warranty services.

8.1 Warranty scope and period.

- ◆ Host: 12 months
- ◆ MIC: 6 months
- ◆ Headphone(optional): 6 months

8.2 Maintenance terms

If you apply for product maintenance, please be sure to provide the company's product warranty card or valid purchase invoice as a proof, during the warranty period, the relevant marks of the product should be kept clean and complete and not torn.

9 Warranty card

In order to protect your rights and interests, please fill in it carefully and keep it properly as a certificate for maintenance.

Reseller information			
Model		Sales date	
Reseller		Contact telephone/E-mail	
User information			
User		Contact telephone	
Address		E-mail	